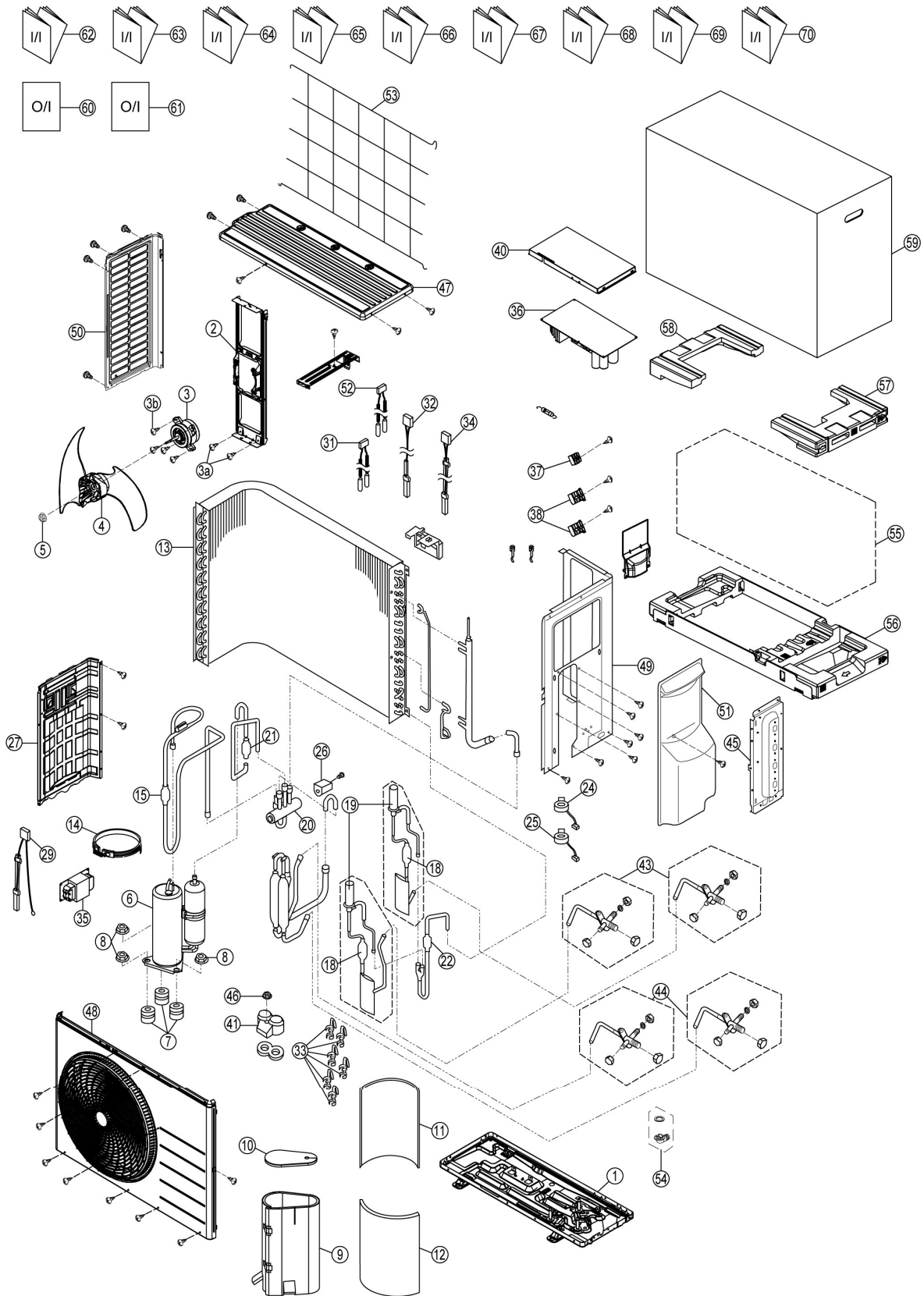


# 18. Exploded View and Replacement Parts List

## 18.1 CU-2E15PBE CU-2E18PBE



Note  
The above exploded view is for the purpose of parts disassembly and replacement.  
The non-numbered parts are not kept as standard service parts.

SAFETY	REF. NO.	DESCRIPTION & NAME	Q'TY	CU-2E15PBE	CU-2E18PBE	REMARK
	1	CHASSIS ASSY	1	CWD52K1277	←	
	2	FAN MOTOR BRACKET	1	CWD541167	←	
⚠	3	FAN MOTOR, AC 50W SINGLE	1	ARW6405AC	←	O
	3a	SCREW-FAN MOTOR BRACKET	2	CWH551217	←	
	3b	SCREW-FAN MOTOR MOUNT	4	CWH55252J	←	
	4	PROPELLER FAN	1	CWH03K1066	←	
	5	NUT - PROPELLER FAN	1	CWH56053J	←	
⚠	6	COMPRESSOR	1	5RD132XFC21	←	O
	7	ANTI - VIBRATION BUSHING	3	CWH50077	←	
	8	NUT - COMPRESSOR	3	CWH56000J	←	
	9	SOUND PROOF MATERIAL	1	CWG302808	←	
	10	SOUND PROOF MATERIAL	1	CWG302630	←	
	11	SOUND PROOF MATERIAL	1	CWG302806	←	
	12	SOUND PROOF MATERIAL	1	CWG302807	←	
	13	CONDENSER COMPLETE	1	CWB32C3722	←	
	14	CRANKCASE HEATER	1	CWA341044	←	
	15	RECEIVER	1	CWB14011	←	
	18	STRAINER	2	CWB111024	←	
	19	EXPANSION VALVE	2	CWB051029	←	O
	20	4-WAYS VALVE	1	CWB001064	←	O
	21	STRAINER	1	CWB111004	←	
	22	STRAINER	1	CWB111080	←	
⚠	24	V-COIL COMPLETE (EXPAND VALVE-WHITE)	1	CWA43C2579	←	O
⚠	25	V-COIL COMPLETE (EXPAND VALVE-YELLOW)	1	CWA43C2580	←	O
⚠	26	V-COIL COMPLETE (4 WAY VALVE)	1	CWA43C2585	←	O
	27	SOUND-PROOF BOARD	1	CWH151366	←	
	29	SENSOR-COMPLETE - INTAKE & PIPE	1	CWA50C3078	←	O
	31	SENSOR-COMPLETE - GAS	1	CWA50C3070	←	O
	32	SENSOR-COMPLETE - DEF.	1	CWA50C3069	←	O
	33	HOLDER-SENSOR	6	CWH32143	←	
	34	SENSOR-COMPLETE - TANK	1	CWA50C2894	←	O
	35	NORMAL-MODE LINE CHOKE COILS	1	G0C193J00004	←	O
⚠	36	ELECTRONIC CONTROLLER	1	CWA73C7215R	CWA73C7216R	O
⚠	37	TERMINAL BOARD ASS'Y	1	CWA28K1162	←	O
⚠	38	TERMINAL BOARD ASS'Y	2	CWA28K1161	←	O
	40	CONTROL BOARD COVER	1	CWH131473	←	
	41	TERMINAL COVER	1	CWH171039A	←	
	43	3-WAY VALVE (LIQUID)	2	CWB011418	←	O
	44	3-WAY VALVE (GAS)	2	CWB011081J	←	O
	45	HOLDER COUPLING	1	CWH351253	←	
	46	NUT - TERMINAL COVER	1	CWH7080300J	←	
	47	CABINET TOP PLATE	1	CWE031148A	←	
	48	CABINET FRONT PLATE CO.	1	CWE06C1468	←	
	49	CABINET SIDE PLATE COMP	1	CWE04C1453	←	
	50	CABINET SIDE PLATE	1	CWE041579A	←	
	51	CONTROL BOARD COVER COMPLETE	1	CWH13C1300	←	
	52	SENSOR-COMPLETE - LIQUID	1	CWA50C3071	←	O
	53	WIRE NET	1	CWD041200A	←	
	54	BAG-COMPLETE	1	CWG87C900	←	
	55	BAG	1	CWG861078	←	
	56	BASE BOARD-COMPLETE	1	CWG62C1144	←	
	57	SHOCK ABSORBER ( R )	1	CWG713415	←	
	58	SHOCK ABSORBER ( L )	1	CWG713416	←	
	59	C.C. CASE	1	CWG566848	←	
	60	OPERATING INSTRUCTION	-	-	←	

SAFETY	REF. NO.	DESCRIPTION & NAME	Q'TY	CU-2E15PBE	CU-2E18PBE	REMARK
	61	OPERATING INSTRUCTION	-	-	←	
	62	INSTALLATION INSTRUCTION	1	CWF615686	←	
	63	INSTALLATION INSTRUCTION	1	CWF615687	←	
	64	INSTALLATION INSTRUCTION	1	CWF615688	←	
	65	INSTALLATION INSTRUCTION	1	CWF615689	←	
	66	INSTALLATION INSTRUCTION	1	CWF615690	←	
	67	INSTALLATION INSTRUCTION	1	CWF615691	←	
	68	INSTALLATION INSTRUCTION	1	CWF615692	←	
	69	INSTALLATION INSTRUCTION	1	CWF615693	←	
	70	INSTALLATION INSTRUCTION	1	CWF615694	←	

(Note)

- All parts are supplied from PAPAMY, Malaysia (Vendor Code: 00029488).
- "O" marked parts are recommended to be kept in stock.